








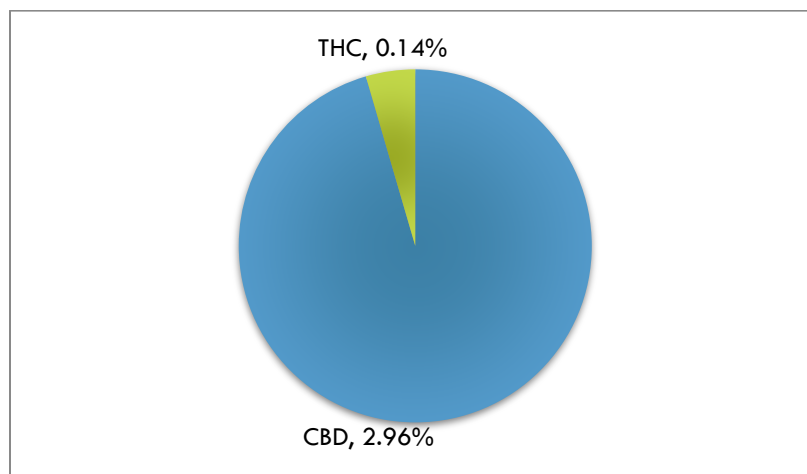


POTENCY REPORT

Material Tested: Whole Pet Tincture 900mg
Testing Method: UPLC-DAD
Date Tested: 04/17/2018
Batch Number: A0314804
Testing Analyst: Ben Dennis; Reviewed by: Jeremy Riggle PhD
Total Product Mass: 30mL

ACIDIC COMPOUND mg/unit		NEUTRAL COMPOUND mg/unit	
CBDA	<0.1%	CBD	2.96% 
THCA	<0.1%	THC	0.14% 
CBCA	<0.1%	CBC	<0.1% 
CBGA	<0.1%	CBG	<0.1% 
CBNA	<0.1%	CBN	<0.1% 
THCVA	<0.1%	THCV	<0.1% 
CBDVA	<0.1%	CBDV	<0.1% 

Cannabinoid Content (wt/wt)



Mary's Nutritionals, LLC is a wholly owned subsidiary of Mary's Medicinals, LLC. Information provided in this report is for CBD rich hemp cultivated by Elite Botanicals, Loveland CO.

