

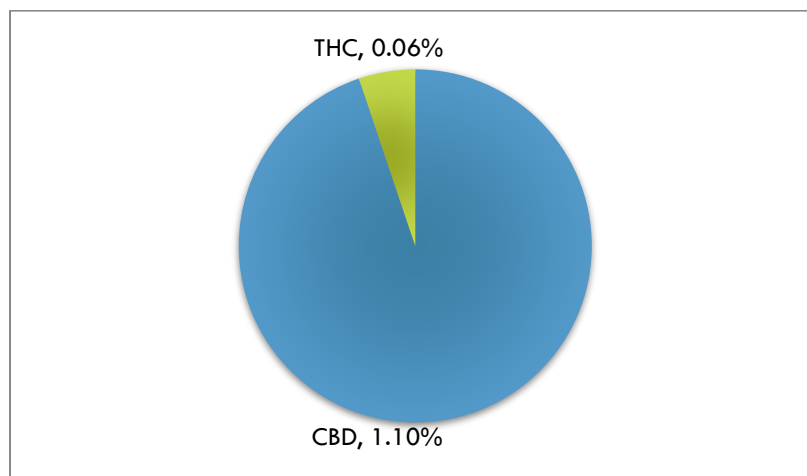


POTENCY REPORT

Material Tested: Whole Pet Tincture 300mg
Testing Method: UPLC-DAD
Date Tested: 04/17/2018
Batch Number: A0314805
Testing Analyst: Ben Dennis; Reviewed by: Jeremy Riggle PhD
Total Product Mass: 30mL

| ACIDIC COMPOUND mg/unit | | NEUTRAL COMPOUND mg/unit | |
|-------------------------|-------|--------------------------|-------|
| CBDA | <0.1% | CBD | 1.10% |
| THCA | <0.1% | THC | <0.1% |
| CBCA | <0.1% | CBC | <0.1% |
| CBGA | <0.1% | CBG | <0.1% |
| CBNA | <0.1% | CBN | <0.1% |
| THCVA | <0.1% | THCV | <0.1% |
| CBDVA | <0.1% | CBDV | <0.1% |

Cannabinoid Content (wt/wt)



Mary's Nutritionals, LLC is a wholly owned subsidiary of Mary's Medicinals, LLC. Information provided in this report is for CBD rich hemp cultivated by Elite Botanicals, Loveland CO.

